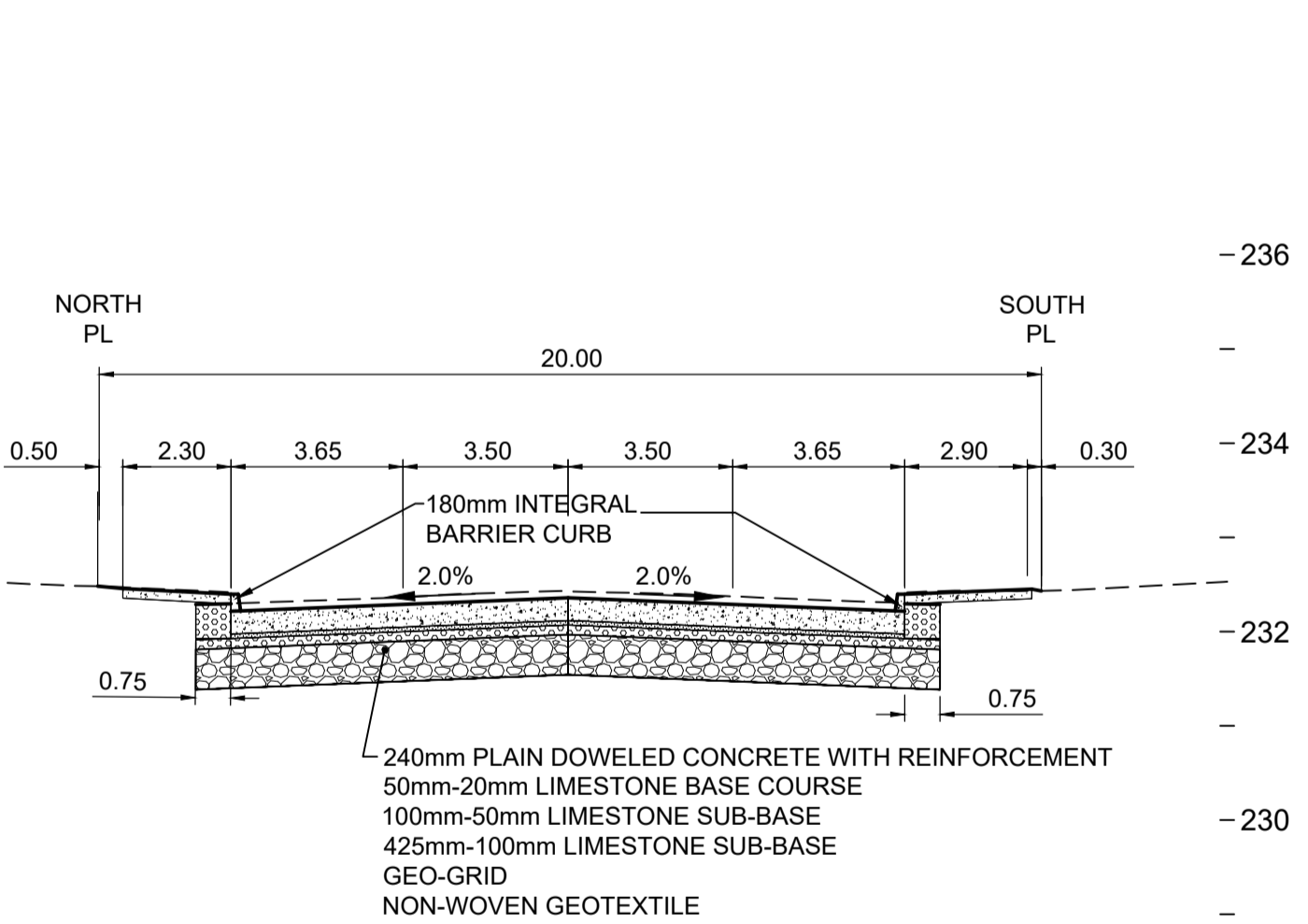
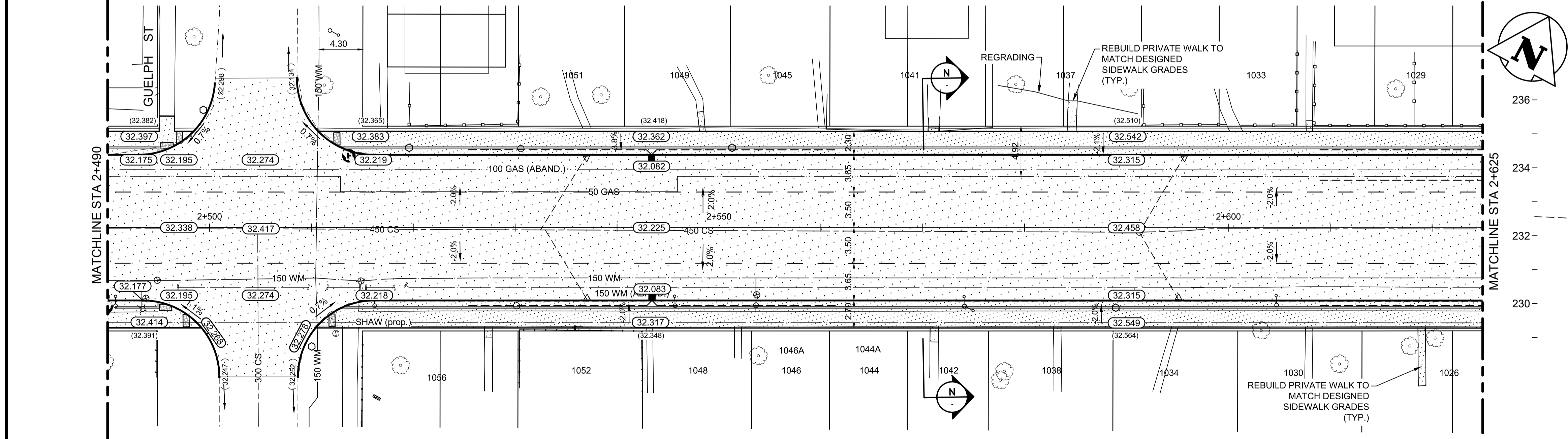


- NOTES:**
- ADJUST EXISTING MANHOLES AS REQUIRED.
 - ADJUST EXISTING VALVE AS REQUIRED.
 - FOR CB's LEADS AND UNDERGROUND INFO SEE SHEET 24 TO 29.
 - INSTALL SUB-DRAINS AS PER PLAN DRAWINGS AS PER SD-245 c/w CAPPED ENDS.
 - PRIVATE APPROACHES ARE 200mm REINFORCED CONCRETE WITH 75mm BASE COURSE, 225mm-50mm SUB-BASE AND NON-WOVEN GEOTEXTILE.
 - RETAIN EXISTING SUB-BASE AND REPLACE CONCRETE SLABS ONLY WHERE PUBLIC LANES, MEDIAN OPENINGS, AND LOCAL STREET TIE-INS WERE RECENTLY RECONSTRUCTED, AS DIRECTED BY THE CONTRACT ADMINISTRATOR.
 - REFER TO TENDER SPECIFICATIONS FOR CONSTRUCTION REQUIREMENTS WORKING ON OR NEAR EXISTING GAS MAINS OR SERVICES.
 - REFER TO TENDER SPECIFICATIONS FOR CONSTRUCTION REQUIREMENTS FOR WORKING ON OR NEAR EXISTING 900 FEEDERMAIN.
 - BLUE PAVERS INSET IN SIDEWALK TO BE CONSTRUCTED AT EACH TRANSIT STOP AND WETSET CLAMP AS PER DETAIL ON SHEET 55.
 - BULLNOSES, APPROACH AND INTERSECTION RADII ARE TO BE INTEGRAL MODIFIED BARRIER CURB.
 - THURSO ST. TO STAFFORD ST. - ONLY STATIC COMPACTION PERMITTED FOR 100mm SUB-BASE.
 - THURSO ST. TO STAFFORD ST. - SUB-CUTTING UNSUITABLE SUB-GRADE MAY NOT BE FEASIBLE DUE TO ABUNDANCE OF GAS SERVICES, GAS MAIN AND WATER SERVICES. CONTRACTOR TO USE SUITABLE EQUIPMENT AND METHODS.
 - GAS ELEVATIONS ARE SHOWN FOR GENERAL GUIDANCE ONLY. CONTRACTOR IS RESPONSIBLE FOR CONFIRMING ALL ELEVATIONS AND LOCATIONS.

2+500 2+550 2+600
CORYDON AVENUE



WARNING

IF POWER EQUIPMENT OR EXPLOSIVES ARE TO BE USED FOR EXCAVATION ON THIS PROJECT THE CONTRACTOR MUST:
 1) NOTIFY THE GAS COMPANY OF THE PROPOSED LOCATION OF EXCAVATION.
 2) TAKE PRECAUTION TO AVOID DAMAGE TO GAS COMPANY INSTALLATIONS.
 SEE PROVINCIAL REGULATION 140/92 FOR DETAILS

METRIC

WHOLE NUMBERS INDICATE MILLIMETRES
 DECIMALIZED NUMBERS INDICATE METRES

EXISTING	PROPOSED	EXISTING	PROPOSED	EXISTING	PROPOSED	EXISTING	PROPOSED
150 WM	150 WM	HYDRO	HYDRO	150 WM	150 WM	300 CS	300 CS
HYDRANT	HYDRANT	M.T.S.	M.T.S.	300 LPS	300 LPS	250 WWS	250 WWS
VALVE	VALVE	CONCRETE	CONCRETE	MANHOLE	MANHOLE	CATCH BASIN	CATCH BASIN
LAND DRAINAGE SEWER	LAND DRAINAGE SEWER	ASPHALT	ASPHALT	CURB INLET/CATCH PIT	CURB INLET/CATCH PIT	TRANSIT STOP	TRANSIT STOP
WASTE WATER SEWER	WASTE WATER SEWER	SIDEWALK	SIDEWALK	GAS	GAS	PROPERTY LINE	PROPERTY LINE
ASPHALT MILL & FILL	ASPHALT MILL & FILL	STREET LIGHT	STREET LIGHT	LEGEND-PLAN	LEGEND-PLAN	PROPOSED	PROPOSED
LEGEND-PROFILE	LEGEND-PROFILE	HYDRO POLE	HYDRO POLE	EXISTING	EXISTING	PROPOSED	PROPOSED
LEGEND-PLAN	LEGEND-PLAN	SURVEY BAR	SURVEY BAR	LEGEND-PROFILE	LEGEND-PROFILE	PROPOSED	PROPOSED
LEGEND-PROFILE	LEGEND-PROFILE	ELEVATION	ELEVATION	LEGEND-PLAN	LEGEND-PLAN	PROPOSED	PROPOSED
LEGEND-PLAN	LEGEND-PLAN	SIDEWALK RAMP	SIDEWALK RAMP	LEGEND-PROFILE	LEGEND-PROFILE	PROPOSED	PROPOSED

LOCATION APPROVED UNDERGROUND STRUCTURES

SUPV. U/G STRUCTURES COMMITTEE DATE

NOTE:
 LOCATION OF UNDERGROUND STRUCTURES AS SHOWN ARE BASED ON THE BEST INFORMATION AVAILABLE BUT NO GUARANTEE IS GIVEN THAT ALL EXISTING UTILITIES ARE SHOWN OR THAT THE GIVEN LOCATIONS ARE EXACT. CONFIRMATION OF EXISTENCE AND EXACT LOCATION OF ALL SERVICES MUST BE OBTAINED FROM THE INDIVIDUAL UTILITIES BEFORE PROCEEDING WITH CONSTRUCTION.

NO.	REVISIONS	DATE	BY
0	ISSUED FOR TENDER	20.02.14	S.R.S.

Stantec
 500 - 311 Portage Avenue, Winnipeg MB Canada
 www.stantec.com

DESIGNED BY: D.C.P. CHECKED BY: R.K.H.
 DRAWN BY: R.S. APPROVED BY: S.R.S.

HOR. SCALE: 1:250
 VERTICAL: 1:10

RELEASSED FOR CONSTRUCTION: DATE

ENGINEER'S SEAL

PRELIMINARY DRAWING

NOT TO BE USED FOR CONSTRUCTION

CONSULTANT DRAWING NO. C-213

THE CITY OF WINNIPEG
 PUBLIC WORKS DEPARTMENT
 ENGINEERING DIVISION

2019-2023 STAFFORD/TAYLOR/CORYDON
 TENDER 1
 CORYDON AVENUE
 STA 2+490 TO STA 2+625
 ROADWORKS - RECONSTRUCTION

SHEET 18 OF 55
 CAD FILE DRAWING NUMBER 08020c-212-932.dwg
 CITY DRAWING NUMBER P-3524-18